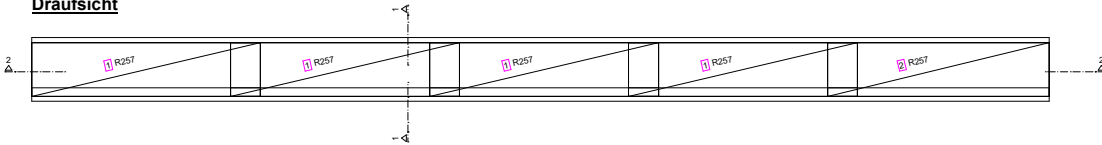


FT 1

Matten - Bewehrung M 1:25

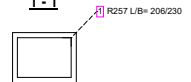
Draufsicht



Schnitt 2 - 2

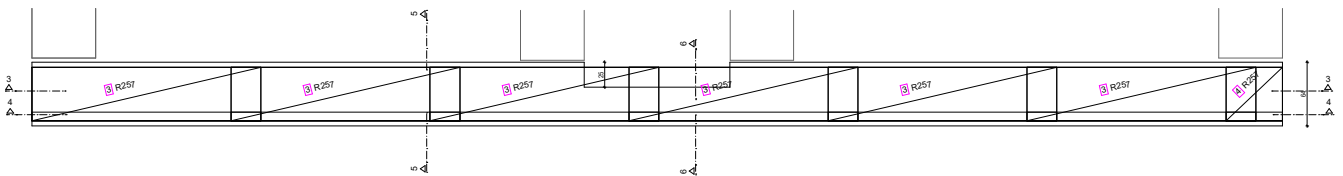


Schnitt 1-1

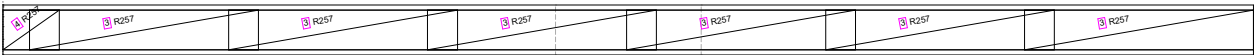


FT 2

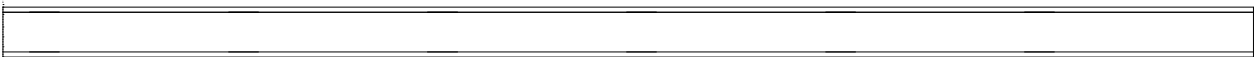
Draufsicht



Schnitt 3 - 3



Schnitt 4 - 4



Schnitt

5 - 5



Schnitt

6 - 6



Mattenstahlliste - Biegeformen

Pos.	Stück	Mattenbez.	Bemaßte Biegeform (unmaßstäblich)	Länge [m]	Breite [m]	Gewicht [kg]
1	4	R257		2,060	2,300	56,58
2	1	R257		2,060	2,230	13,68
3	6	R257		2,060	2,300	84,87
4	1	R257		2,060	0,570	3,49

Gesamtgewicht: 158,62