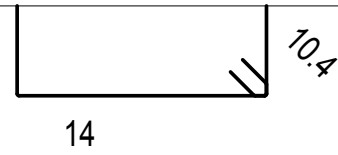


2

4

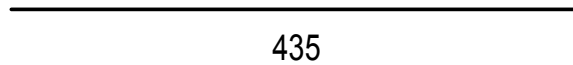
20

4.35



14

10.4



435

17.40

3

2

8

0.82

37.8



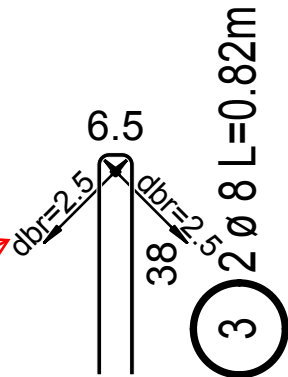
6.4

db r=3

Biegerollendurchmesser als Faktor

Gesamtmasse [kg] :

Biegerollendurchmesser in cm



db r=2.5

6.5

db r=2.5

38

3 2 Ø 8 L=0.82m